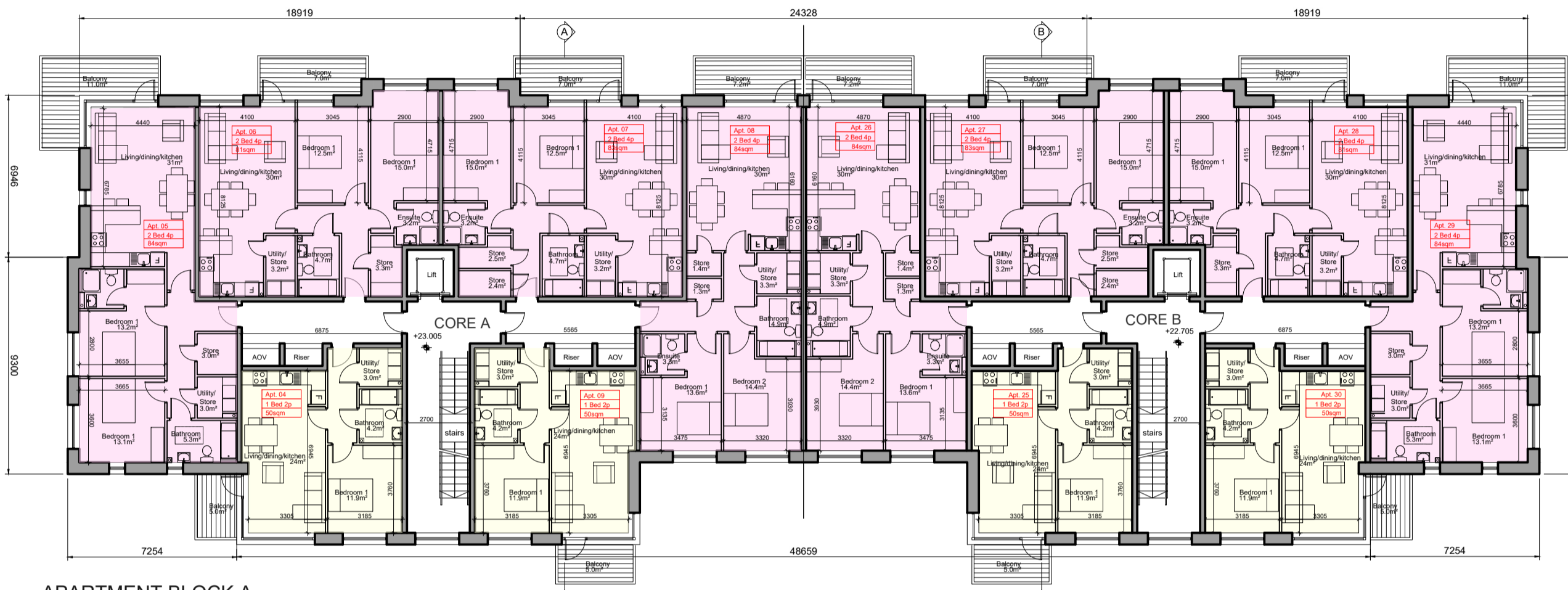


APARTMENT BLOCK A  
FIRST FLOOR PLAN



APARTMENT BLOCK A  
FIRST FLOOR PLAN



APARTMENT BLOCK A  
GROUND FLOOR PLAN



APARTMENT BLOCK A  
NORTH ELEVATION



APARTMENT BLOCK A  
SOUTH ELEVATION



APARTMENT BLOCK A  
SECTION A-A

**Unit Type**

- 2 Bed Apartment - 4 Person
- 1 Bed Apartment

Apt. Block	1 Beds	2 Beds	Total Units
A	18	30	48

- © This drawing is copyright.
- 1 Do not scale this drawing.
- 2 Errors and omissions to be immediately notified to Architect.
- 3 All dimensions to be checked on site.
- 4 To be read with relevant Engineers drawings.

**Note on Internal Floor Plans**

All noted room areas are gross.

The proposed areas and aggregate areas comply with *Sustainable Urban Housing: Design Standards for New Apartments Guidelines for Planning Authorities. (December 2020)*

Where bedroom areas are noted they are exclusive of any built-in storage space.

Storage is generally provided off the hallway or kitchen, and is not provided within a bedroom.

Furniture, fittings and fixtures shown on the plans are indicative.

**External Finishes:**

**Roof:**  
Single ply roof membrane behind parapet.

**Walls:**  
Selected facing brick with render where indicated on drawings with precast / stone capping or pressed metal capping to parapets

**Louvers:**  
Proprietary metal louvered doors with colour to match windows/doors where indicated on drawings.

**Windows:**  
Aluminium framed window system

**Gutters/downpipes:**  
uPVC or aluminium

**Balconies:**  
Projecting: Toughened glazing & stainless steel handrails on precast concrete or metal frame galvanized steel base and guarding/ railing.

**Entrance Canopy:**  
Pressed or standing seam metal on Timber framing

revisions	date	ins
description		
Apartment Block A		
Ground, First, Second Floor Plans, Sections & Elevations		
job		scale
Development at Oldtown, Swords, Co. Dublin Phase 5		1:200 A1
client		date
Gerard Gannon Properties		MAR '22
issue		drawn
Planning SHD Stage 3		LD
		checked
		PG

**CONROY CROWE KELLY ARCHITECTS**  
65 MERRION SQUARE  
DUBLIN 2  
PHONE 6613990/1 FAX 6765715  
E-MAIL info@ccck.ie